

**Head Office**

20-4, asahishinmachi, Takamatsu-City,
Kagawa 760-0064
TEL: +81-87-821-0035 FAX: +81-87-821-0040

Distribution Center

3-104, asahimachi 5-chome, Takamatsu-City,
Kagawa 760-0065
TEL: +81-87-822-1060 FAX: +81-87-821-0024

Osaka Branch

4-1-36, nagatahigashi, Higashiosaka-City, Osaka 577-0012
TEL: +81-6-6747-1735 FAX: +81-6-6747-3539

Okayama Branch

130-1, kurogane, higashi-ku, Okayama-City, Okayama 703-8214
TEL: +81-86-278-4435 FAX: +81-86-278-2835

Yokohama Office

2-1-5, kitashin-yokohama, kouhoku-ku, Yokohama-City, Kanagawa 223-0059
TEL: +81-45-642-3574 FAX: +81-45-642-3584

Himeji Office

326-3, higashiyama, Himeji-City, Hyogo 672-8014
TEL: +81-79-280-1035 FAX: +81-79-280-1036

Kurashiki Office

1397-2, nakashima, Kurashiki-City, Okayama 710-0803
TEL: +81-86-465-1235 FAX: +81-86-465-5935

Tsuyama Office

1038-1, kawanabe, Tsuyama-City, Okayama 708-0842
TEL: +81-868-26-5835 FAX: +81-868-26-4035

Fukuyama Office

2-5-21, ouji-cho, Fukuyama-City, Hiroshima 721-0965
TEL: +81-84-926-6035 FAX: +81-84-926-4035

Hiroshima Office

3-3-15, konan, Naka-ku, Hiroshima-City, Hiroshima 730-0825
TEL: +81-82-241-2635 FAX: +81-82-241-2636

Takamatsu Office

12-20, asahishinmachi, Takamatsu-City, Kagawa 760-0064
TEL: +81-87-821-0033 FAX: +81-87-822-6200

Marugame Office

7-836, doki-cho higashi, Marugame-City, Kagawa 763-0082
TEL: +81-877-23-0253 FAX: +81-877-23-0377

Niihama Office

3-27, takihama 6-chome, Niihama-City, Ehime 792-0893
TEL: +81-897-46-3935 FAX: +81-897-46-3939

Imabari Office

5-13, higashitoriu-cho, Imabari-City, Ehime 794-0801
TEL: +81-898-32-3017 FAX: +81-898-32-3019

Matsuyama Office

6-13-20, kukodori, Matsuyama-City, Ehime 791-0054
TEL: +81-89-972-0660 FAX: +81-89-972-0673

Ozu Office

164-15-1, yasarai, Ozu-City, Ehime 795-0006
TEL: +81-893-23-9235 FAX: +81-893-23-9236

Kochi Office

6-22, nakata-cho, Kochi-City, Kochi 780-8007
TEL: +81-88-833-8515 FAX: +81-88-833-8508

Tokushima Office

2-186-1, kitaokinosu, Tokushima-City, Tokushima 770-0872
TEL: +81-88-664-5535 FAX: +81-88-664-3518

SANKO PRECISION SINGAPORE PTE., LTD

78 Shenton Way #25-02 Lippo Centre Singapore
TEL: +65-6324-5324 FAX: +65-6324-6324

SANKO PRECISION HONGKONG LIMITED

Unit 3308-9, 33/F., Saxon Tower, 7 Cheung Shun Street,
Lai Chi Kok, Kowloon, Hong Kong
TEL: +852-2302-0320 FAX: +852-2376-0799

SANKO PRECISION HONGKONG LIMITED

(Shenzhen Representative Office)
17B6 Guangcai New World, 2002 Nanshan Avenue,
Nanshan District Shenzhen, China
TEL: +86-755-8612-2962 FAX: +86-755-8612-2950

SANKO PRECISION SHANGHAI TRADING CO., LTD

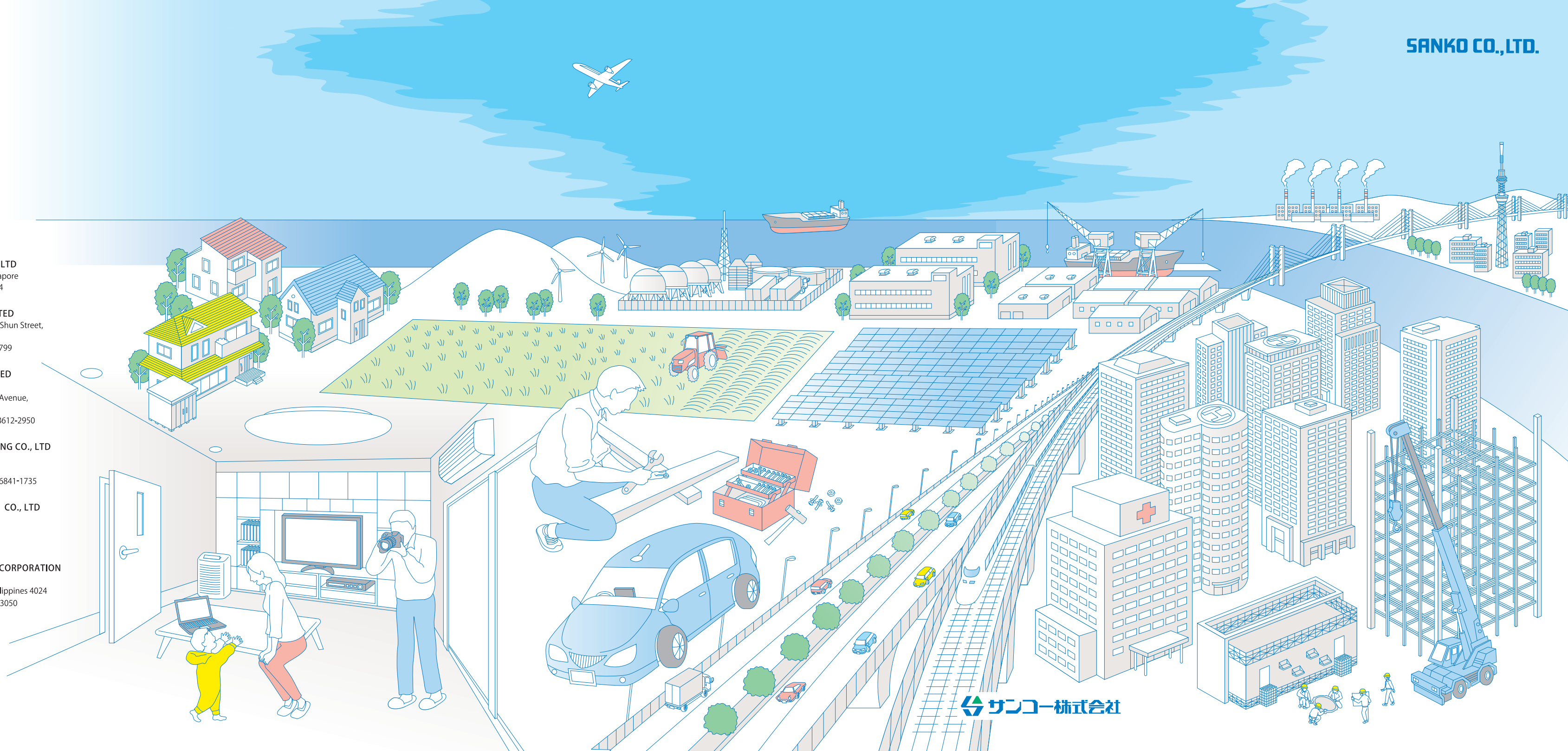
1015 Gold River Center No88, Shishan Rd,
Suzhou New District, Jiangsu, P.R.CHINA
TEL: +86-512-6841-1635 FAX: +86-512-6841-1735

SANKO PRECISION DALIAN TRADING CO., LTD

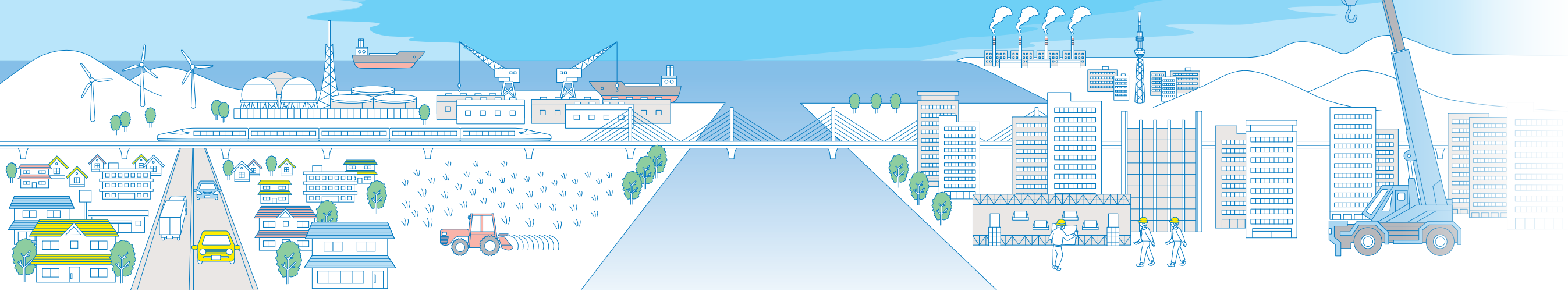
1103A Huineng Building, 24 Haitian Road,
Dalian Free Trade Zone, Dalian, China
TEL: +86-411-8718-6235

SPP SANKO PRECISION PHILIPPINES CORPORATION

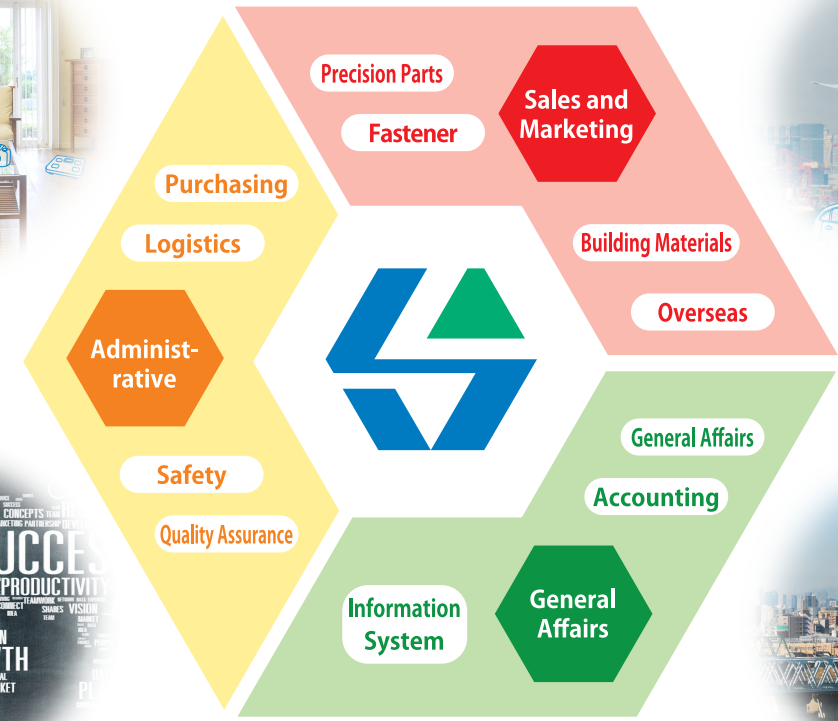
Unit C, 149 East Main Ave Loop, Phase 6-C,
Laguna Technopark Inc, Binan, Laguna, Philippines 4024
TEL: +63-49-540-0035 FAX: +63-49-540-3050



Connecting you to the world, to the future with a quality created by Sanko



SANKO CO.,LTD.



Precision Parts Division

Fastener Division

Building Materials Division

Overseas Division

Quality Assurance / Safety / Purchasing Dept.

Company Name Sanko Co., Ltd.
Representative President and CEO Nobuyuki Kono
Capital ¥70,000,000-
Number of Employees 230
Founded May, 1961
Head Office 20-4, asahishinmachi, Takamatsu-City, Kagawa, 760-0064, JAPAN
TEL : +81-87-821-0035 FAX : +81-87-821-0040
Business Offices 15 business offices in Japan; Kagawa, Tokushima, Ehime, Kochi, Osaka, Hyogo, Okayama, Hiroshima, Kanagawa
Overseas Branches Sanko Precision Singapore Pte., Ltd. (SPS)
Sanko Precision Hong Kong Limited. (SPH) / Shenzhen Office
Sanko Precision Shanghai Trading Co., Ltd. (SPST)
Sanko Precision Dalian Trading Co., Ltd. (SPD)
SPP Sanko Precision Philippines Corporation
Affiliated Companies Sanko Kasetsu Lease Co., Ltd.
Aoi Kikou Co., Ltd.
Sanko Steel Co., Ltd.
Seto Co., Ltd.
Sanko Bussan Co., Ltd.



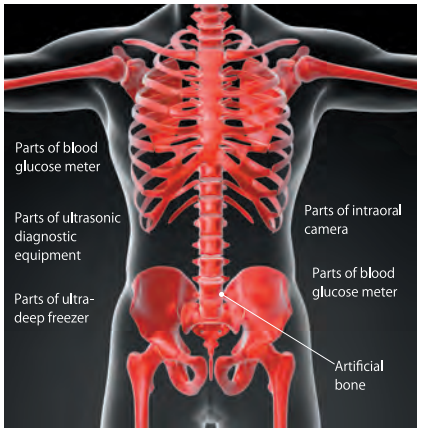
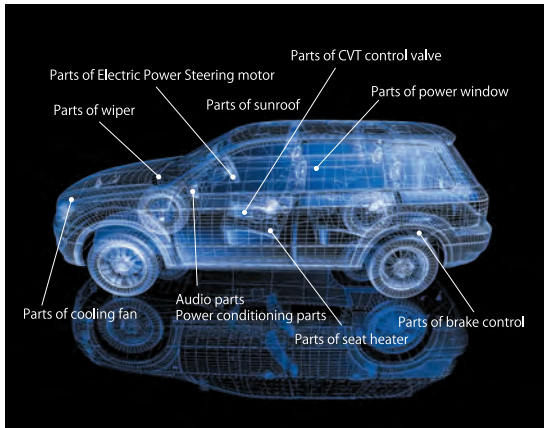
Melting in and for comfortable life



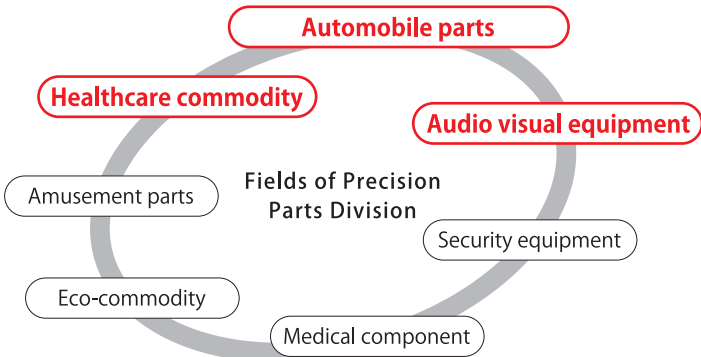
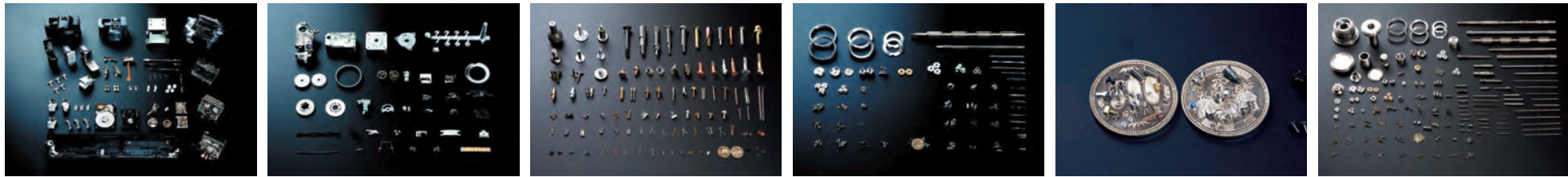
(Accuracy × reliability) × assurance = "precision parts" that Sanko delivers to your comfortable life

Precision Parts Division provides precision and functional products, which are created with advanced technology in various fields; home electronics, office automation equipment, IT-related field, medical services, and automobile parts. Moreover, Precision Parts Division recognizes that the environmental problems are important issues which may affect all humankind and keeps it improving for reducing the effects that products give to environment all the time to exercise social responsibility as a business enterprise. We join a meeting in our capacity as center player of manufacturer all the time to keep providing responsible products. In the field of precision machining, we often receive technical supports from Aoi Kiko Co.Ltd, an affiliate subsidiary company whose technology and equipment are outstanding and up to date in Japan. Our service fully covers from co-development, proto type, process audit to the stable delivery during the mass production.

Example of products



Precision machine screw / machining parts / coil spring / precision stamping parts / casting parts / sintering parts / cosmetic metal parts / unit parts / plastic injection molding parts / rubber parts etc.



5 persistences



We are confident in precision parts. Sanko meets various needs with five persistences; accuracy, quality, delivery, cost, and environment.

Quality system flow chart



Performance delivered to the market for more than a half centry, it's a sign of trust



Proposal of solution with "metal forming technology", "cost", and "quality" just in time

Fastener Division provides wide range products from general fastening products, which are used for various types of industry such as shipbuilding, automobile, agricultural machinery, and residence, to custom made products.



Shipbuilding

We are providing various parts related to shipbuilding focusing on the core of shipbuilding technology, fastener components to customers utilizing Sanko's original procurement capability.



Automobile

We are providing functional parts that satisfy all requirements of automobile parts with various technologies such as metal forming, machining and much more under the strict quality management system.



Agricultural machinery / crane

We procure fastener components and functional parts for wide range of field such as construction machine, agricultural machine, and general industrial machine from domestic and international suppliers to deliver products which can make customers satisfied.



Holding down bolt for main machine of shipbuilding parts

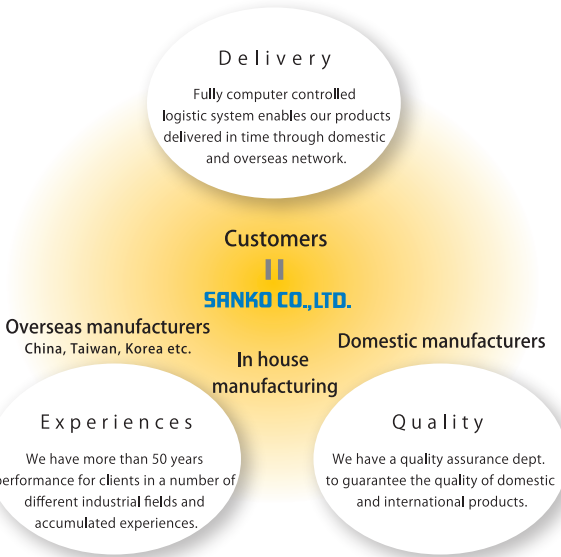


In-house invented product "LOCK ONE®"

This is an original product that produces an effect for any of workability, product performance, and cost performance focusing on problems of loosening and falling of nut.



● Integrated system from proposal to purchase network, production, quality assurance, assembly, and delivery



General industrial screw parts / machining parts / cold/ hot forging parts / precision casting parts / stamping parts / plastic injection molding parts / rubber products / bearing / ship rigging products/ adhesive agent / surface processing / tools / assembly parts / FA equipment etc.

Connecting and supporting the expanding social infrastructure



Coordinator of social infrastructure

Sales engineers of building materials division support you with professional knowledges and smart suggestions

Building materials division provides fastening related products and consumable parts such as various anchor bolt, high-strength bolt, brace, stud dowel which are used for iron frame work, bridgework structuring work for the earth quake absorbing and carries out the installation on site. We also deliver various products used for construction work of public institutions, hospitals, condominium buildings, civil engineering work of bridges, highways and dams. We are hidden key player of infrastructure that works out the future. We are supporting people's life at invisible places.



PC bridge construction



Large-scale general hospital

Iron and steel dept.

Various column base constructions by construction section



High base

Base back

D through construction method



High tension bolt



Brace



Splice



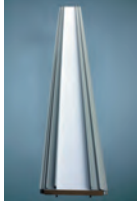
Reinforcement of opening

Building material dept. (construction / civil engineering work)

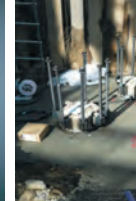


Level-man

Base-man



Aseismic slit materials



Crown Pile Anchor



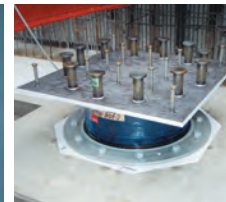
Pile stud



Stud dowel



Weblen bar



Aseismic isolator



Kamakura roof fan

Fields and handling products of building materials division

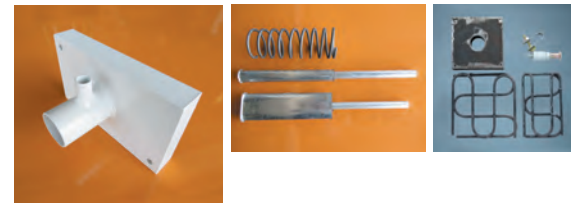
iron & steel

- Construction iron and steel: High tension bolt / splice / brace / various anchor bolts / Hibase / Heyling / Basepack / FabluxG / Freedomut / stud dowel construction / pedestal installation work / D-through
- Iron and steel for bridge: High tension bolt / various weather-resistant high tension bolts / large-diameter anchor bolt for bridge

building materials

- Construction materials
- Basic materials: NCP anchor / pile stud / pile cutter / Crown Pile Anchor / Level-man
- Materials related to reinforcing steel: Base-man / binding wire / various spacers / CS joint / Balchip / Weblen
- Materials related to iron frame: High base / Basepack / stud dowel / wire lope
- Materials related to mold form: Separator / form tie / bend panel / lath frame / chamfer strip / joint strip / slit
- Materials related to equipment: Insert / high stack / roof fan / smoke hatch / post-installed anchor
- Materials related to outdoor facility / temporary materials: Grating / roof drain / manhole / temporary materials / gate / fence
- Materials related to bridge and general civil engineering
- Safety appliances / temporary materials: Construction sign / temporary materials / various sheets / wire lope
- Materials related to mold form: Wall former / separator / separating material / large mold form
- Materials related to bridges (PC): Anchor plate / insert / spacer / grid bar / retarder / curing compound
- General construction materials: Various civil engineering sheet / Kentight / various nets / PVC pipe / civil engineering pipe / various hoses

Products for bridges

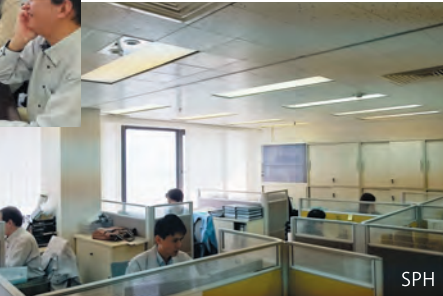
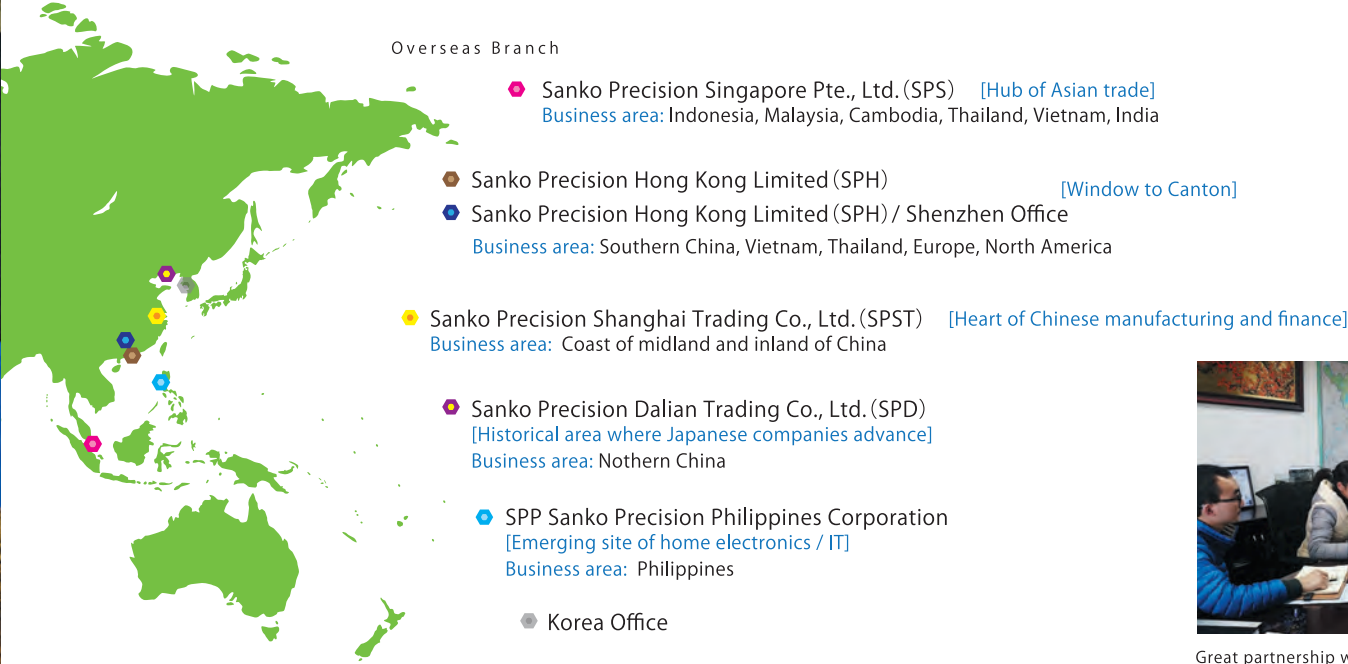
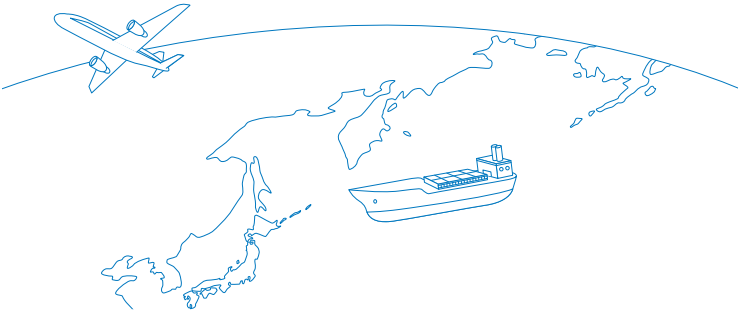


Delivering japanese high quality to the world



Providing value engineering service and products to the local customers with quality

Sanko started the overseas sales since 1999. While the area expands, main products are expanding from parts for consumer electronics products to HDD, IT-related parts, medical instruments, and automobile. We keep supporting our worldclass customers by supplying superb quality and competitiveness exceeding the ones in Japan and keep seeking global quality with local collaborative partners.



SPH

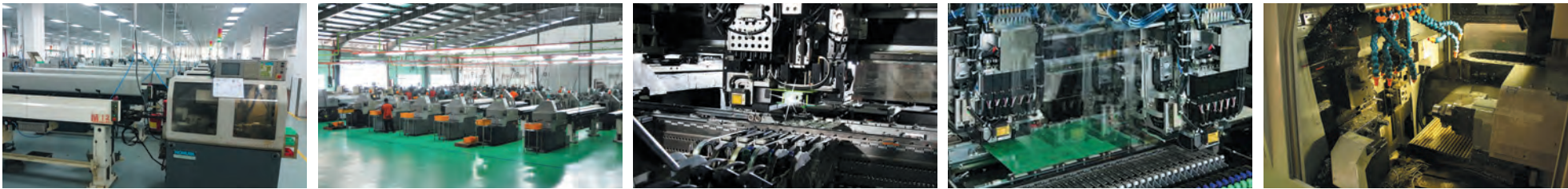


SPST



SPS

Great partnership with the local suppliers are the key for success and we are so proud what we've done for it. It will promise us the future as well.



The things are for continuing the quality products and its proof

Quality Assurance department



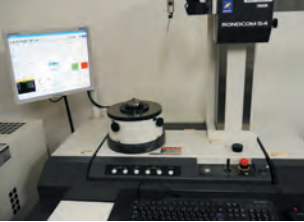
Even a small part, it links reliability, reassurance, comfortable life, and safety. In case even a tiny defect can cause a fatal accident. Managing and guaranteeing the product quality while receiving the "responsibility" ... it is also assurance of "happiness" of family. Sanko carries out the quality assurance not for decision to pass or fail of measurement, but for obtaining a sure proof for continuing conforming item that is directly linked to safety of product and obtaining the reliability of final customers.



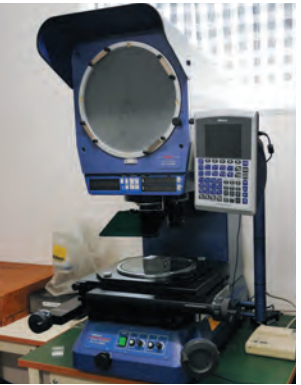
Quality assurance system responding to confidence
We undertake the task of Sanko's quality assurance as the quality assurance system including all departments such as development, sales, purchase, and logistics in addition to quality management in manufacturing process. We have responded to confidence from customers through not only development of our company's technology, but also upstream management including quality inspection by cultivating quality manufacturers all the time. We will aim at the perfect quality assurance system following the standard of ISO9000 series.

Environmental policy
Sanko experiments with information exchange from home and overseas and recognizes that the environmental problems are important issues common to all humankind as "manufacturer vender of screw" that provides bolted connection of huge structure to precision functional parts as a foundation of development for next-generation culture and civilization and improves the environmental effects given in business activity and aims at reconciliation with nature to exercise social responsibility as a company.

[Green procurement in Sanko]
Sanko purchases products getting conscious about function, quality, cost of product, and green procurement. It means the procurement of environment-friendly parts and materials, improvement of environmental awareness, and link to expansion of market of green products to make all products related to Sanko and group environmental friendly. We construct the environment management system including all business partners carry out the continuous improvement.



Roundness and Cylindrical Profile Measuring Instruments



Profile Projector



Micro Vickers Hardness Testing Machines



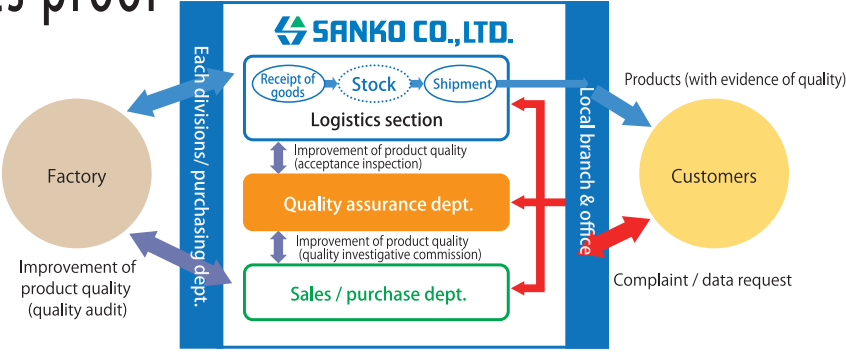
Surface Texture and Contour Combined Measuring Instruments



Ultraviolet and Visible Spectrophotometer



EDX: Energy Dispersive X-ray Fluorescence Spectrometer



ISO9001 Management System Certificate
Name of Certificate : ISO9001
Scope of Certificate : An industrial use conclusion part and the sale of the precision function part
Certificate No. : JQA-QM6576
Certification Body : Japan Quality Assurance Organization (JQA)



ISO14001 Management System Certificate
Name of Certificate : ISO14001
Scope of Certificate : An industrial use conclusion part and the sale of the precision function part
Certificate No. : JQA-EM3943
Certification Body : Japan Quality Assurance Organization (JQA)



Certified as JIS certified factory with anchor bolt set for structure

Safety section

Activity for safety and health

Safety and health policy

The basic philosophy in all business activities of Sanko Co., Ltd. is "respect for human life". We become aware of it and carry out the following activities aiming at the improvement of industrial health and safety level under the faith "preventing industrial accident".

- (1) We establish the safety and health committee to improve industrial health and safety continuously.
- (2) We observe laws and regulation related to industrial health and safety, standards required by customers, and company rules.
- (3) We provide education and training to improve understanding and awareness of industrial health and safety.
- (4) We surely carry out the risk assessment on construction planning phase to comprehend the effects on industrial health and safety accompanied with building enterprise adequately.
- (5) We develop 5S activity and create comfortable work environment.

Safety patrol



Safety and health education



Safety and health committee



Contractor's license



Purchasing department



We are constructing partner relationship with a lot of domestic and international affiliated factories to provide customer satisfaction price, good products and services. We carry out procurement responsibility as a company on social and environmental phases and carry out well balanced activities aiming at development of both of society and company. We provide valuable products and services for customers with staff of affiliated factories through clean and fair procurement activity. We observe environmental management system in addition to quality, price, and delivery date and carry out the environment conservation activity aspiringly to fulfilling needs of customers and quality request.



Logistics section



The logistics center of Head Quarters is a domestic and international sales site that carries is a hub which supporting for domestic and overseas in import/ export. Okayama branch utilizes automatic warehouse to cover the logistics in the honshu Japan. For the response to container and the response to pallet case, especially small box / actual number, the tablet picking system is realized based on domestic product information and overseas site to promote the shipment work by IT introduction.



We are striving for being essential and selected by customers, market and era.



To be the one being essential and selected

A screw is regarded as a key component in the industry like 'salt in your soup'. A screw is essential product which works on smart phone, automobile, shipbuilding, machinery, industrial instruments and also takes an important role in a mega construction building and bridges.

Sanko has responded to the customers demand since 1961 in a view of customer oriented mindset with providing of all kinds of metal forming technologies as a trader and a manufacturer as well.

Not only providing the fastening products which are for massive production and high-mix low-volume production with meeting the demanding of cost, quality and delivery but also providing problem solutions to support our customers business winning by the products made in-house and by more than 800 partnership manufacturers through the global procurement network.

A long term bestselling product 'Level-man' which invented by Sanko and 'LOCK ONE' which is co-developed with a manufacturer are good examples of the brilliant result of responding the needs from customers and markets.

Under the corporate motto 'Connecting up with quality and trust for an affluent society', all members of Sanko is keep moving forward to be the one being essential and selected.

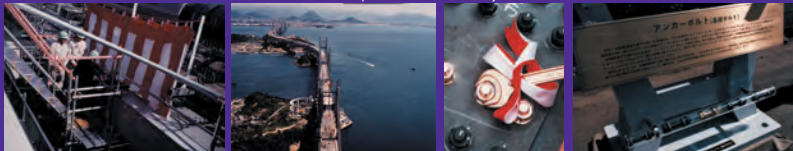
Sanko Co., Ltd. President and CEO **Nobuyuki Kono**

May 1961 Sanko Bolt Corporation was established in Shiogami-cho, Takamatsu
 Sept. 1962 Sanko Bolt Y.K. established
 Feb. 1966 Relocated to Taga-cho, Takamatsu
 Nov. 1967 Y.K. was reorganized to Co., Ltd.
 May 1969 Reinforced concrete 4-story, ISO warehouse completed
 Mar. 1973 Head Quarters building and warehouse were newly relocated to Asahimachi, Takamatsu
 Apr. 1973 Company name was changed to Sanko bolt Co., Ltd.
 Nov. 1973 Sanko bussan Co., Ltd. established
 Jun. 1975 Seto Co., Ltd. established



Monumental stone for 30th anniversary of founding [May 1991]

"Seto Long-Bridge" connecting main island and Shikoku started the service on April 10, 1988 in 9 years and 6 months after commencement of work in 1978. A lot of products delivered by Sanko are used.



Nov. 1976 Aoi Kikou Co., Ltd. established
 Feb. 1979 Sanko kasetsu leasing Co., Ltd. established
 Apr. 1985 Renamed to Sanko Co., Ltd. (CI introduced)
 May 1991 Memorial event for 30th anniversary, monumental stone "Mutual Trust" engraved
 40th anniversary of founding
 May 2001 Certified according to ISO9002: 1994
 Apr. 2004 Certified according to ISO14001: 1996
 Mar. 2007 Head Quarters office (sales / office work division) was relocated to Asahishinmachi, Takamatsu upon business expansion
 Sept. 2007 Head Quarters office received "20th NIKKEI NEW OFFICE AWARD Shikoku New Office Promotion Prize"
 Apr. 2009 Aoi Kikou Co., Ltd. received a national Prize for Creativity from Minister of ECSS and Technology
 Jul. 2009 Osaka business office was moved up to Osaka branch
 Sept. 2010 Aoi Kikou Co., Ltd. Certified according to ISO/TS16949: 2009 (quality Austria)
 Feb. 2012 Aoi Kikou Co., Ltd. received a national prize for "The monodukuri Nippon Grand Award" from Minister of ET and Industry
 Aoi Kikou Co., Ltd. Received grand prix of "Ashihara Science Award"



Aseismic



Seismic



SEA JAPAN 2010 [Apr. 2010]



SEA JAPAN 2014 [Apr. 2014]



FACTORYNETWORK BUSINESS CONFERENCE @ Shanghai 2010 [Sept. 2010]



Exhibition hosted by KAGAWA INDUSTRY SUPPORT FOUNDATION [Jul. 2014]



SEA JAPAN 2012 [Apr. 2012]



FACTORYNETWORK BUSINESS CONFERENCE @ Shanghai 2014 [Sept. 2014]

Apr. 2010 A presentation was made in SEA JAPAN 2010
 Sept. 2010 A presentation was made in FACTORYNETWORK BUSINESS CONFERENCE @ Shanghai 2010
 Sept. 2011 A presentation was made in FACTORYNETWORK BUSINESS CONFERENCE @ Shanghai 2011
 Apr. 2012 A presentation was made in SEA JAPAN 2010
 Sept. 2012 A presentation was made in New Technology / New Construction Method Exhibition Business Meeting Kagawa Prefecture
 Sept. 2013 A presentation was made in FACTORYNETWORK BUSINESS CONFERENCE @ Shanghai 2013
 Oct. 2013 A presentation was made in New Technology / New Construction Method Exhibition Business Meeting Kagawa Prefecture
 Feb. 2014 Okayama business office was moved up to Okayama branch
 Apr. 2014 A presentation was made in SEA JAPAN 2014
 Jul. 2014 A presentation was made in New Technology / New Construction Method Exhibition Business Meeting Kagawa Prefecture
 Sept. 2014 A presentation was made in FACTORYNETWORK BUSINESS CONFERENCE @ Shanghai 2014
 Oct. 2014 A presentation was made in Architecture Exhibition NAGOYA 2014
 Feb. 2015 A presentation was made in Business Matching Fair for Design and Manufacturing
 Jun. 2015 A presentation was made in 19th Machine Element Technology Exhibition
 Oct. 2015 A presentation was made in 18th Kansai Machine Element Technology Exhibition (M-Tech Kansai)
 Nov. 2015 A presentation was made in Highway Techno Fair 2015
 – cutting edge technology supporting free ways –

CSR activity



Received gold prize, silver prize, and bronze prize in prize-fiving of radio gymnastic exercises



Cultivating mangoes at Sun Farm TOKI



Installation of solar panels

Sanko Co., Ltd. is supporting Kamatamare SANUKI.



Cleaning activity at Takamatsu My Road

Affiliated Companies



AOI KIKOU Co., Ltd.

Company Name AOI KIKOU Co., Ltd.
 Representative President and CEO Nobuyuki Kono
 Capital ¥25,000,000-
 Founded Mar, 1972
 Head Office 3-7-5, asahimachi, Takamatsu-City,
 Kagawa, 760-0065, JAPAN
 Takamatsu Factory 3-7-5, asahimachi, Takamatsu-City,
 Kagawa, 760-0065, JAPAN
 Ozu Factory 164-15-91-1 yasurai, Ozu-City, Ehime,
 795-0006, JAPAN



Head Office
 TEL : +81-87-822-5025
 FAX : +81-87-821-0075
 URL : <http://www.aoikikou.co.jp/>

Business summary

- Safety related parts for automobile
- Medical instruments parts
- Semiconductor manufacturing equipment parts
- Various motor shafts
- For vehicle, sanitary
- Machining of difficult-to-cut materials such as Kovar, beryllium, titanium and Co-Cr Alloy



Main machine and equipment [Factory line]

Machining center 10P	14 units	Thread rolling machine	5 units
CNC automatic lathe (spindle movement type)	133 units	Cleaner (ultrasonic cleaner, alkali, hydrocarbon cleaning)	12 units
CNC lathe (spindle fixation type)	64 units	General-purpose milling machine etc.	21 units
Cylindrical grinder, centerless grinder	13 units	Additionally, tumbler, air blast, shot blast etc.	



ISO9001 Management System Certificate [Takamatsu factory]



ISO/TS 16949 Management System Certificate [Takamatsu factory]



ISO/TS 16949 Management System Certificate [Ozu factory]



ISO14001 Management System Certificate



Takamatsu factory [First factory / Second factory]



Takamatsu factory [Third factory]



Takamatsu factory [Fourth factory]



Ozu factory



Sanko Kasetsu Lease Co., Ltd.

Company Name Sanko Kasetsu Lease Co., Ltd.
 Representative President and CEO Nobuyuki Kono
 Capital ¥25,000,000-
 Founded Feb. 1979
 Head Office 77-20, Shirowa-otsu, Showa, Sanuki-City, Kagawa, 769-2304, JAPAN
 (Takamatsu East Factory Park)
 Takamatsu equipment center 77-20, Shirowa-otsu, Showa, Sanuki-City, Kagawa
 Marugame equipment center 275-1, minami-kou, Kawanishicho, Marugame-City, Kagawa
 Ehime equipment center 495, tanokamigata, Tanbaracho, Saijo-City, Ehime
 Tokushima equipment center 122-1, miyamoto, Nishinakatomi, Itanocho, Itano-gun, Tokushima
 Kochi equipment center 1097-120, umayatoko, Yahata, Okouchi, Nankoku-City, Kochi



Head Office
 TEL : +81-879-52-0335
 FAX : +81-879-52-0016
 URL : <http://lease.sanko-kk.net/>

Business summary

- Installation of scaffolding for house, building and steel frame work
- Stud dowel construction, post-installed anchor construction
- Manufacturing and reuse of scaffolding and it's related hardwares
- Sales of materials shown above

Authorization of building enterprise license chartered by Governor of Kagawa (general_27) No. 5199



ISO9001 Management System Certificate

Civil engineering, steeplejack / earthwork, steel structure, water supply facility, pavement construction works



Sanko bussan Co., Ltd.

2-2-2, asahimachi, Takamatsu-City, Kagawa, 760-0065, JAPAN
 TEL : +81-87-821-0023
 FAX : +81-87-821-0793
 URL : <http://bussan.sanko-kk.net/>



Seto Co., Ltd.

2-2-4, tagacho, Takamatsu-City, Kagawa, 760-0063, JAPAN
 TEL : +81-87-835-2300
 FAX : +81-87-861-8482



ISO9001 Management System Certificate

Lease sales division

We are certified as designated factory of Scaffolding and Construction Equipment Association of Japan and certified according to ISO9001 to provide scaffolding so that customers can use safe products at ease. All installation is carried out by certified persons only so we can make it sure and safe all the time.



Scaffolding sales division

In 1986, we got to work on rental service with prefabricated scaffolding construction. We have provided products mainly as external scaffolding for house construction. Currently, it is widely adopted as scaffolding for construction work of building, warehouse, and business office etc. Since 2010, we have introduced "scaffolding construction managing engineer" and "scaffolding consultant" as in-house verification systems to challenge the creation of field for "safety, relax and touching".



Domestic / overseas network



Head Office
20-4, asahishinmachi, Takamatsu-City,
Kagawa 760-0064
TEL: +81-87-821-0035
FAX: +81-87-821-0040



Distribution Center
3-104, asahimachi 5-chome,
Takamatsu-City, Kagawa 760-0065
TEL: +81-87-822-1060
FAX: +81-87-821-0024



Okayama Branch
130-1, kurogane, higashi-ku,
Okayama-City, Okayama 703-8214
TEL: +81-86-278-4435
FAX: +81-86-278-2835



Hiroshima Office
3-3-15, konan, Naka-ku, Hiroshima-
City, Hiroshima 730-0825
TEL: +81-82-241-2635
FAX: +81-82-241-2636



Osaka Branch
4-1-36, nagatahigashi,
Higashiosaka-City, Osaka 577-0012
TEL: +81-6-6747-1735
FAX: +81-6-6747-3539



Fukuyama Office
2-5-21, ouji-cho, Fukuyama-
City, Hiroshima 721-0965
TEL: +81-84-926-6035
FAX: +81-84-926-4035



Himeji Office
326-3, higashiyama, Himeji-
City, Hyogo 672-8014
TEL: +81-79-280-1035
FAX: +81-79-280-1036



Yokohama Office
2-1-5, kitashin-yokohama, kouhoku-ku,
Yokohama-city, Kanagawa 223-0059
TEL: +81-45-642-3574
FAX: +81-45-642-3584



Takamatsu Office
12-20, asahishinmachi, Takamatsu-
City, Kagawa 760-0064
TEL: +81-87-821-0033
FAX: +81-87-822-6200



Kurashiki Office
1397-2, nakashima, Kurashiki-
City, Okayama 710-0803
TEL: +81-86-465-1235
FAX: +81-86-465-5935



Marugame Office
7-836, doki-cho higashi, Maru-
-game-City, Kagawa 763-0082
TEL: +81-877-23-0253
FAX: +81-877-23-0377



Tsuyama Office
1038-1, kawanabe, Tsuyama-
City, Okayama 708-0842
TEL: +81-868-26-5835
FAX: +81-868-26-4035



Matsuyama Office
6-13-20, kukodori, Matsuyama-
City, Ehime 791-0054
TEL: +81-89-972-0660
FAX: +81-89-972-0673



Niihama Office
3-27, takihama 6-chome,
Niihama-City, Ehime 792-0893
TEL: +81-897-46-3935
FAX: +81-897-46-3939



Kochi Office
6-22, nakata-cho, Kochi-City,
Kochi 780-8007
TEL: +81-88-833-8515
FAX: +81-88-833-8508



Tokushima Office
2-186-1, kitaokinosu, Tokushima-
City, Tokushima 770-0872
TEL: +81-88-664-5535
FAX: +81-88-664-3518



Ozu Office
164-15-1, yasurai, Ozu-City,
Ehime 795-0006
TEL: +81-893-23-9235
FAX: +81-893-23-9236



Imabari Office
5-13, higashitoriu-cho, Imabari-
City, Ehime 794-0801
TEL: +81-898-32-3017
FAX: +81-898-32-3019



SANKO PRECISION DALIAN TRADING CO., LTD
1103A Huineng Building, 24 Haitian Road,
Dalian Free Trade Zone, Dalian, China
TEL: +86-411-8718-6235



SANKO PRECISION SHANGHAI TRADING CO., LTD
1015 Gold River Center No88, Shishan Rd,
Suzhou New District, Jiangsu, P.R.CHINA
TEL: +86-512-6841-1635
FAX: +86-512-6841-1735



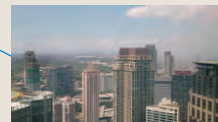
SANKO PRECISION HONGKONG LIMITED (Shenzhen Representative Office)
17B6 Guangcai New World,
2002 Nanshan Avenue,
Nanshan District Shenzhen, China
TEL: +86-755-8612-2962
FAX: +86-755-8612-2950



SANKO PRECISION HONGKONG LIMITED
Unit 3308-9, 33/F., Saxon Tower, 7 Cheung Shun Street,
Lai Chi Kok, Kowloon, Hong Kong
TEL: +852-2302-0320
FAX: +852-2376-0799



SANKO PRECISION SINGAPORE PTE., LTD
78 Shenton Way #25-02 Lippo Centre Singapore
TEL: +65-6324-5324
FAX: +65-6324-6324



SPP SANKO PRECISION PHILIPPINES CORPORATION
Unit C, 149 East Main Ave Loop, Phase 6-C,
Laguna Technopark Inc, Binan, Laguna, Philippines 4024
TEL: +63-49-540-0035
FAX: +63-49-540-3050

